

---

## Block Editor

The authoring environment of the Infinity platform is designed and developed considering the modern requirement of multimedia content and flexibility in organizing the content quickly and easily.

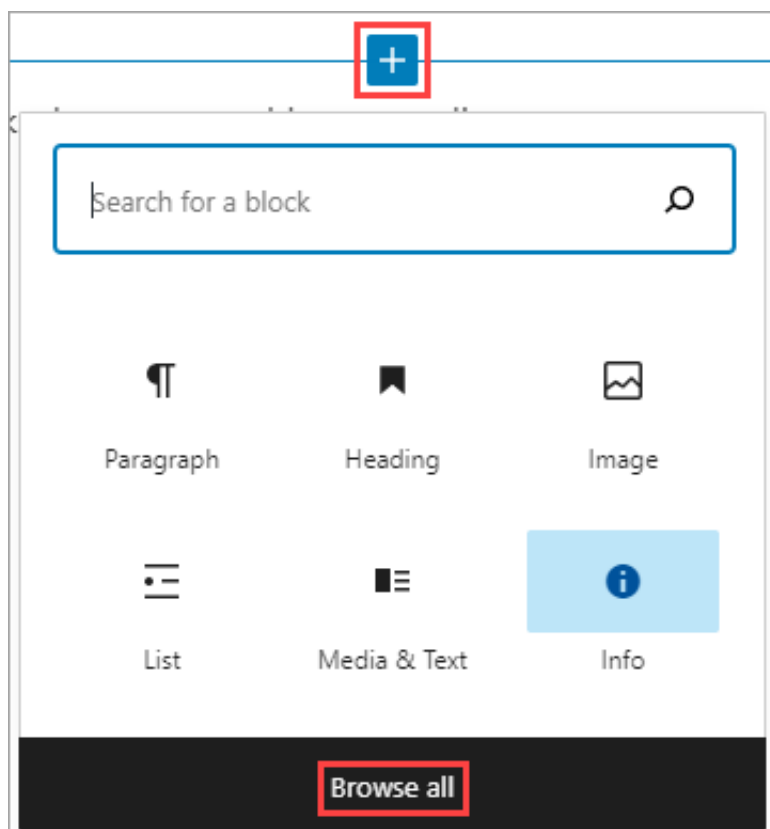
The block editor is the authoring environment where you can add the content in the form of blocks arranged from top to bottom of the page. These blocks can be for the same content type or different. For example, blocks for paragraphs, tables, images, audios/videos, bulleted lists, notes, codes, and many more.

After adding blocks and adding content to these blocks, you can rearrange these blocks simply by clicking the **Up** and **Down** arrows from the toolbar. This rearrangement keeps the content intact while moving the block to the new location.

## Blocks library

The Infinity platform provides a library of blocks. You can browse the library and select the required block for your content.

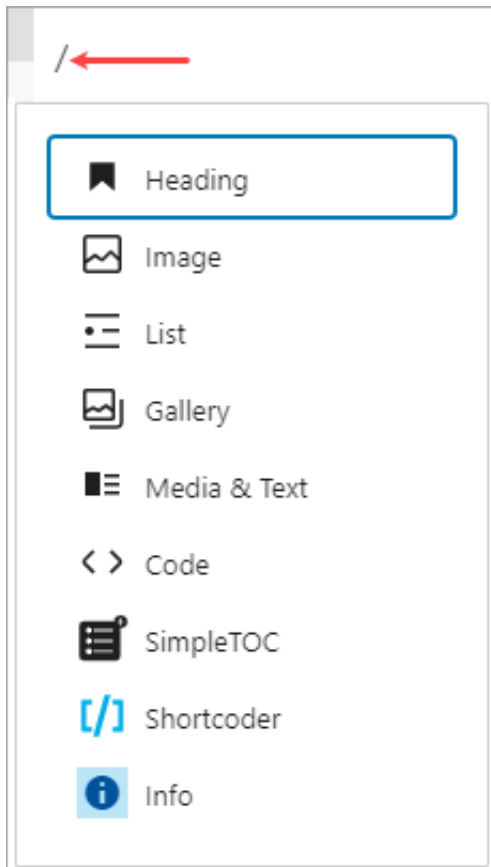
To access the block library, the block editor provides a plus icon at different places, like in between two blocks, on the main toolbar, or at the end of an empty paragraph line. Clicking this plus icon displays the blocks panel with the most used blocks. In the panel, click the **Browse all** button to view the list of all blocks provided by the Infinity platform.



---

## Blocks panel

The block editor also provides a shortcut key slash (/) to pull the list of blocks that you can add to your editor.



## Block toolbars

Each block provides a separate toolbar with options to manage the content of the block. Once you add a block in the editor, the block toolbar appears displaying the corresponding buttons to make the required changes in the block content.



**Note:** The block toolbar can either appear on the main toolbar or appear as floating on the respective block.

### Floating toolbar

Appears just above the block when you click inside the block.

---



The block editor not just provides a block to add content, but also provides additional configurations according to the block that you select.

## Main toolbar

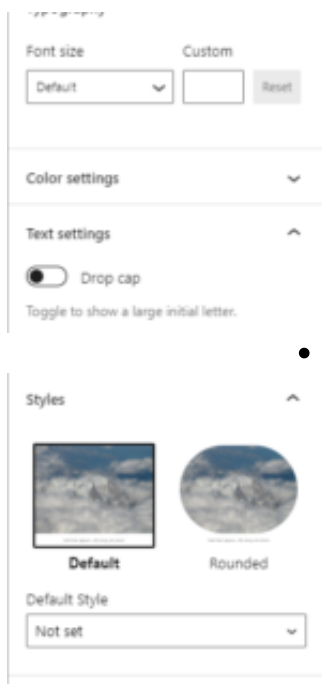
Appears on the main toolbar when you click inside the block.



Each block provides a separate toolbar with options to manage the content of the block. Once you make the required changes in the block content.

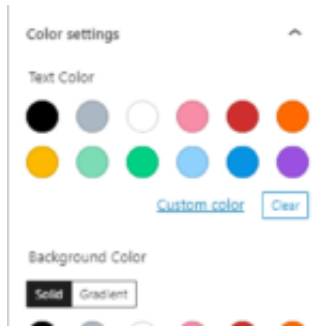
## Block configurations

The block editor not just provides a block to add content, but also provides additional configurations that can help you enhance your block as per the business requirement. These configurations differ according to the block that you select.



- Paragraph Block

- Image Block



- List Block

